

Electric Distribution Service Areas

PSC Regulated Rural Electric Utilities

- Big Sandy R.E.C.C.
- Blue Grass Energy Cooperative Corp.
- Clark Energy Cooperative, Inc.
- Cumberland Valley Electric, Inc.
- Farmers R.E.C.C.
- Fleming-Mason Energy Cooperative
- Grayson R.E.C.C.
- Inter-County Energy Cooperative
- Jackson Energy Cooperative
- Jackson Purchase Energy Corporation
- Kenergy Corp
- Licking Valley R.E.C.C.
- Meade County R.E.C.C.
- Nolin R.E.C.C.
- Owen Electric Cooperative, Inc.
- Salt River Electric Cooperative
- Shelby Energy Cooperative, Inc.
- South Kentucky R.E.C.C.
- Taylor County R.E.C.C.

PSC Regulated Investor Owned Utilities

- Duke Energy Kentucky, Inc.
- Kentucky Power Company
- Kentucky Utilities Company
- Louisville Gas and Electric Company

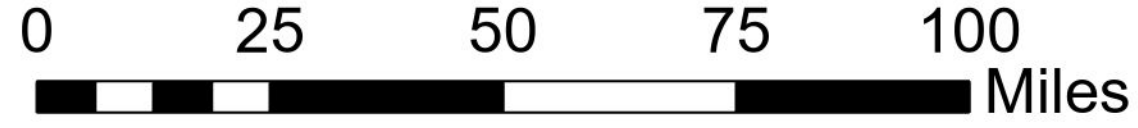
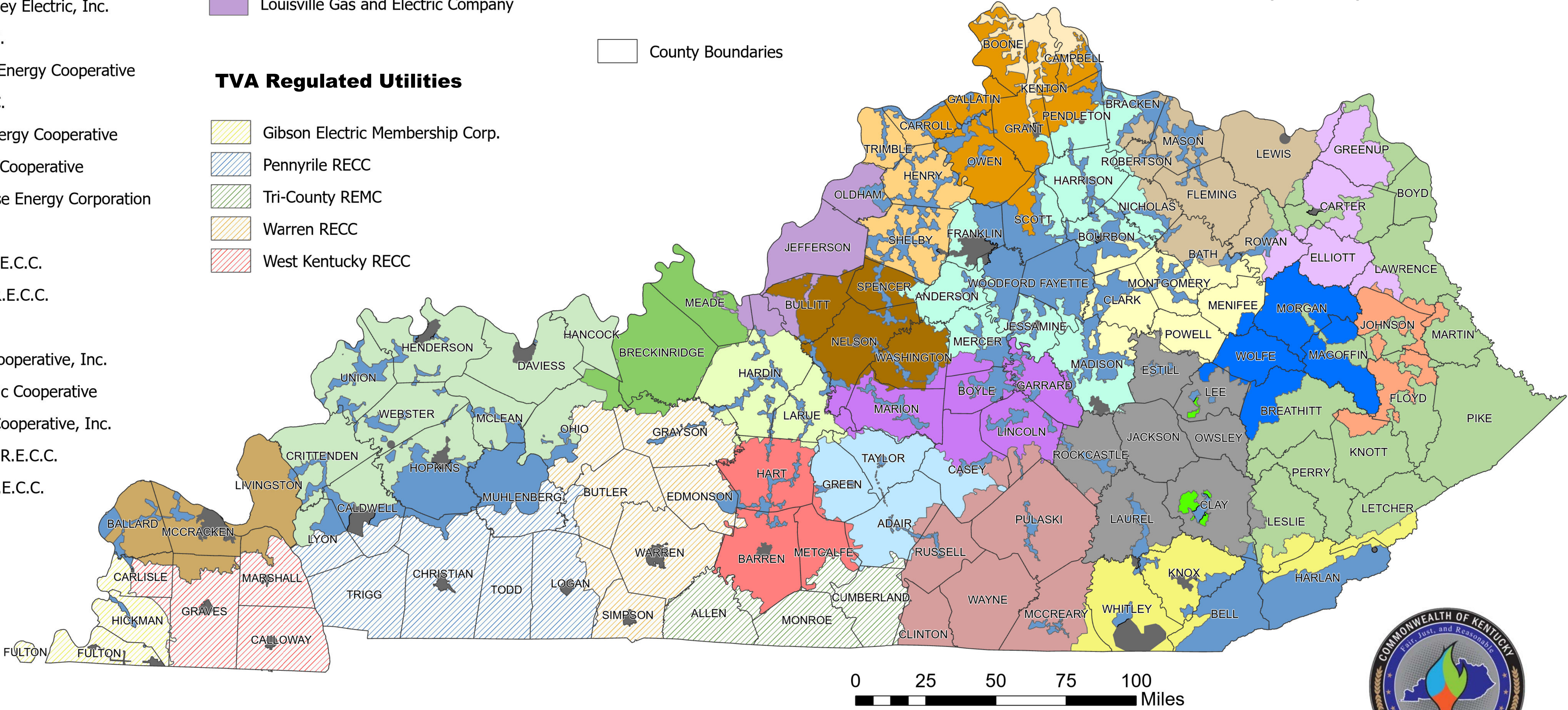
TVA Regulated Utilities

- Gibson Electric Membership Corp.
- Pennyriple RECC
- Tri-County REMC
- Warren RECC
- West Kentucky RECC

Multi-Service Area

- Jackson Energy Cooperative/KU
- Municipal
- County Boundaries

The electric service areas are compiled from certified territory maps on file with the Public Service Commission. These are legal documents which define the retail service area of electric suppliers regulated by the Commission (Kentucky Statute 278.017). The legal certified territory boundaries are drafted on 1:24,000 USGS topographic maps, and can be assumed to have an accuracy of 100 feet. This map, which was compiled from the data, is for informational purposes only, and has no legal standing.



Kentucky has 30 municipal systems serving over 500,000 customers. Ten of these are provided wholesale power by the Tennessee Valley Authority (TVA) and are regulated by them. The others are self-regulated by the municipality.

The boundaries for the municipal systems were either derived from the Public Service Commission's certified territory maps, or from boundaries submitted for informational purposes to the PSC from the municipals. If the municipal service area boundaries were unknown, a circle was placed around the urbanized area.